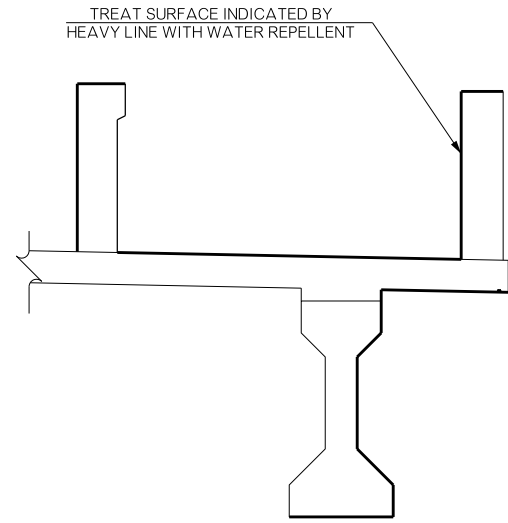
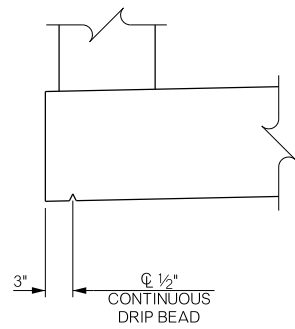


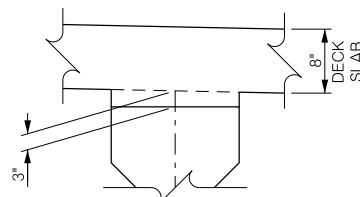
REVISIONS		
REV. NO.	DESCRIPTION	DATE



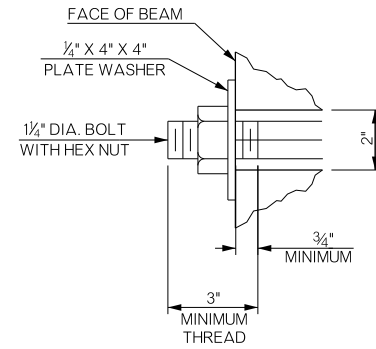
PENETRATING WATER REPELLENT SEALANT



DETAIL OF DRIP BEAD

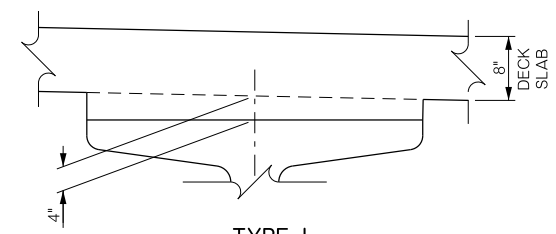


TYPE IV BEAM HAUNCH DETAIL



DETAIL A DIAPHRAGM BOLT FASTENER DETAILS

NOTE: PROVIDE STRUCTURAL STEEL FOR DIAPHRAGM BOLTS AND PLATE WASHERS IN ACCORDANCE WITH AASHTO M270 (ASTM A709), GRADE 50W (WEATHERING STEEL, CHARPY V-NOTCH TESTING NOT REQUIRED). THE CONTRACTOR MAY SUBSTITUTE A #10 REINFORCING BAR IN ACCORDANCE WITH AASHTO M31, GRADE 60, AND THREADED AT THE ENDS AS SHOWN TO THE DEPARTMENT. PROVIDE HEX NUTS IN ACCORDANCE WITH AASHTO M291 (ASTM A563). PAINT EXPOSED DIAPHRAGM BOLT, PLATE WASHER AND HEX NUT WITH TWO (2) COATS OF ZINC-RICH PAINT (6 MIL MINIMUM THICKNESS) AFTER ASSEMBLY. INCLUDE ALL COST OF DIAPHRAGM BOLT, PLATE WASHER AND HEX NUT IN THE CONTRACT UNIT PRICE FOR STRUCTURAL STEEL.



TYPE J BEAM HAUNCH DETAIL

NOTE: PLAN QUANTITIES FOR CLASS AA CONCRETE INCLUDES 117.8 CUBIC YARDS FOR HAUNCHES OVER BEAMS. HAUNCH HEIGHT SHOWN IS PLANNED HEIGHT AT CENTERLINE OF BEARING ONLY. AND VARIES ACROSS THE SPAN. HAUNCH HEIGHT TO BE DETERMINED AFTER ERECTION OF BEAMS TO PROVIDE FOR DEAD LOAD DEFLECTION AND GRADE ADJUSTMENT, BUT THE PAY QUANTITY WILL BE AS SHOWN. FOR "DEADLOAD DEFLECTION DIAGRAM" SEE P.C. BEAM DETAILS ON SHEETS NO. B047 - B051.

STAY-IN-PLACE DECK FORM NOTES

THE CONTRACTOR MAY USE STAY-IN-PLACE STEEL DECK FORMS IF THE MINIMUM DECK SLAB THICKNESS OF 8" IS OBTAINED BY MEASURING FROM THE TOP OF THE DECK SLAB TO THE TOP PORTION OF THE STEEL CORRUGATION. PREFORMED CORRUGATION FILLER, COMPOSED OF POLYSTYRENE OR OTHER MATERIAL, MAY BE USED IF BONDED TO THE DECK FORMS. NO ADDITIONAL CONCRETE WEIGHT OF THE DECK SLAB IS PERMITTED. THE TOTAL ADDITIONAL WEIGHT OF THE DECK FORMS AND FILLER SHALL NOT EXCEED 5 P.S.F. THE DEPARTMENT CONSIDERS ALL COSTS OF STAY-IN-PLACE STEEL DECK FORMS TO BE INCLUDED IN THE CONTRACT UNIT PRICE OF CLASS AA CONCRETE.

THE CONTRACTOR MAY SUBSTITUTE STAY-IN-PLACE PRESTRESSED CONCRETE DECK FORMS, AT NO ADDITIONAL COST TO THE DEPARTMENT, IF THE FOLLOWING CONDITIONS ARE MET:

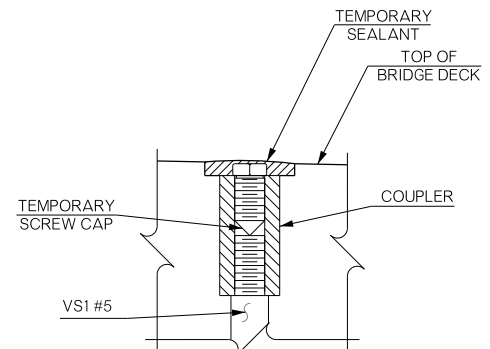
- (1) THE BRIDGE ENGINEER APPROVES SHOP DRAWINGS AND STRUCTURAL CALCULATIONS FOR THE FORMS SUBMITTED BY THE CONTRACTOR.
- (2) THE BRIDGE ENGINEER APPROVES NEW STRUCTURAL DESIGN, STRUCTURAL CALCULATIONS, AND A NEW REINFORCING SCHEDULE FOR THE DECK SLAB SUBMITTED BY THE CONTRACTOR.
- (3) SHOP DRAWINGS, NEW DECK SLAB REINFORCING SCHEDULE, STRUCTURAL DESIGNS AND CALCULATIONS ARE PREPARED AND SEALED BY A PROFESSIONAL ENGINEER LICENSED IN THE STATE OF OKLAHOMA.

DECK SLAB NOTES

EPOXY-COATED OR GALVANIZED STEEL ITEMS USED TO FACILITATE CONSTRUCTION, SUCH AS DECK FORM HANGERS, TY-BAR CLIPS, INSERT WELD ANCHORS, OR OTHER APPURTENANCES, THAT WILL REMAIN IN THE DECK SLAB, EPOXY-COAT IN ACCORDANCE WITH AASHTO M284 OR GALVANIZE IN ACCORDANCE WITH AASHTO M111.

IN THE EVENT OF AN EMERGENCY, HALT THE PLACEMENT OF CONCRETE BY FORMING A CONSTRUCTION JOINT MADE PERPENDICULAR TO THE DIRECTION OF TRAFFIC OR AS DIRECTED BY THE ENGINEER. DO NOT PLACE ANY HEAVY EQUIPMENT ON THE FINISHED DECK SLAB WITHIN 5' OF ANY CONSTRUCTION JOINT UNTIL CONCRETE IS IN PLACE ON BOTH SIDES OF THE RESPECTIVE JOINT AND AT LEAST 48 HOURS HAS ELAPSED SINCE CONCRETE PLACEMENT.

SEAL ALL DECK SLAB CONSTRUCTION JOINTS WITH HIGH MOLECULAR WEIGHT METHACRYLATE IN ACCORDANCE WITH SECTION 523 OF THE SPECIFICATIONS. INCLUDE ALL COST OF EQUIPMENT AND LOBOR FOR THE INSTALLATION OF THE HIGH MOLECULAR WEIGHT METHACRYLATE SEALER IN THE CONTRACT UNIT PRICE OF "SEALER CRACK PREPARATION". INCLUDE ALL COST OF THE HIGH MOLECULAR WEIGHT METHACRYLATE SEALER IN THE CONTRACT UNIT PRICE OF "SEALER RESIN". THE DEPARTMENT WILL NOT MEASURE THE PREPARATION AND SEALER OF EMERGENCY CONSTRUCTION JOINTS FOR PAYMENT.



DETAIL OF MECHANICAL COUPLER INSTALLATION FOR 42" CONCRETE PARAPET

PROTECT COUPLER FROM TRAFFIC AND ELEMENTS BY TEMPORARILY SETTING A THREADED SCREW-CAP IN OPENING. SEAL WITH ASPHALT OR OTHER MANUFACTURER RECOMMENDED MATERIAL. REMOVE SCREW-CAP PRIOR TO FINAL PLACEMENT OF "VS" BARS.

BRIDGE "A" SH-33 OVER COTTONWOOD CREEK		LOGAN COUNTY		Design	GT	11/15
DETAILS OF SUPERSTRUCTURE (SHEET 4 OF 14)				Detail	TIS	10/15
				Check	TT	7/16
STATE OF OKLAHOMA				DEPARTMENT OF TRANSPORTATION		Squad: PEARSON Eng: HERNANDEZ
JOB/PIECE NO. 21860(04)		SHEET NO. B057				